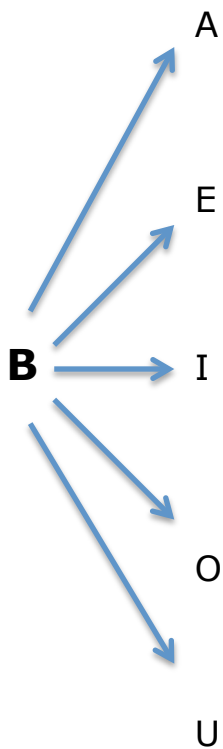


Sillabe: BA BE BI BO BU

✎ Completa e leggi



BA

ba

BE

be

BI

bi

BO

bo

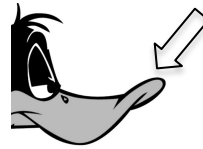
BU

bu



___NANA

banana



___cco

becco



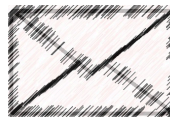
___RILLO

birillo



___TTONE

bottone

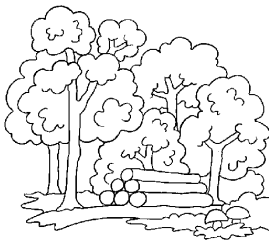


___STA

busta

✎ Completa con le sillabe

BA BE BI BO BU



___SCO



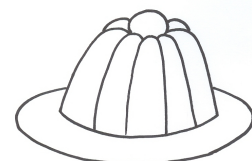
___RCA



___FANA



___RO



___DINO